

*Pattern Design Guides by Don McCunn***Palazzo Pants**

These patterns can be used to make Palazzo pants. The instructions include how to create the patterns and basic sewing instructions.

(rev: 10/24/2008)

Copyright © 2008 by Donald H. McCunn

- You may copy this Pattern Design Guide for your own individual use.
- You may not distribute or sell copies of the instructions to others including friends, club members, students, or clients.
- You may sell garments made using these instructions without any restrictions.

Design Enterprises of San Francisco
1007 Castro Street, San Francisco, CA 94114
(415) 282-8813 || Website: Patternmaking-Classes.com
Yahoo Groups: <http://groups.yahoo.com/group/How-to-Make-Sewing-Patterns>
<http://groups.yahoo.com/group/Patternmaking-Classes>

Palazzo Pants

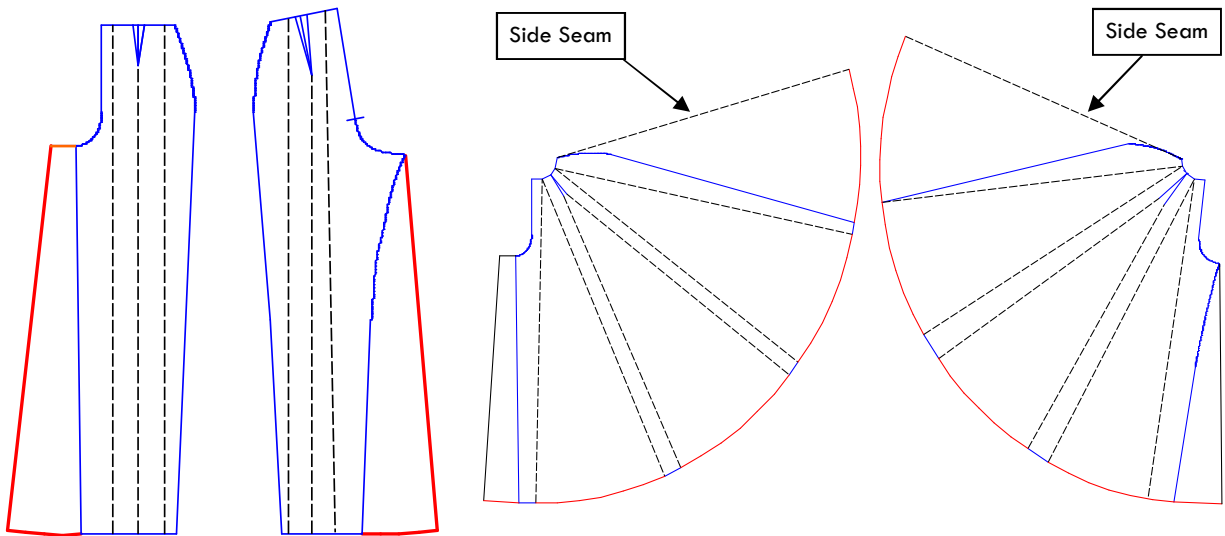
by Don McCunn

Introduction

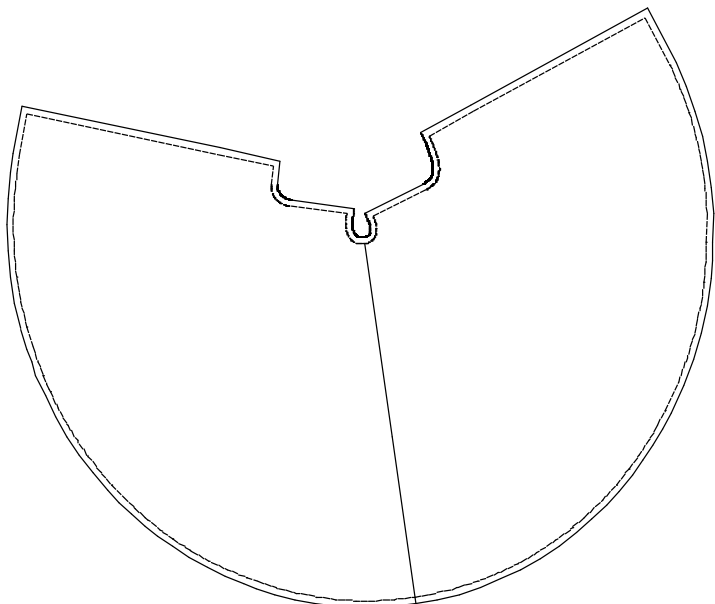
Palazzo pants are an example of taking the sloper and adding a good deal of fullness. The amount of fullness you can add will depend on the fabric you are using. For this example fabric is used that has some stretch so no separate closing device, such as a zipper, is required. The Palazzo pants of the cover are an open work net fabric.

To create this style you can use either the slash and spread or trace and pivot pattern design technique. These instructions illustrate the cut and spread approach.

Create the Pattern



1. On a copy of the sloper, shown as blue lines above, draw lines that divide the front and the back into fourths, the black dotted lines. These are the lines you will slash to create the new pattern.
2. Extend front crotch curve out. This keeps the front of the Palazzo pants from hugging the front of the body.
3. Add fullness at the hem to the front and back inseams. This example adds 6" (15cm) to the hem.
4. Cut along the black dotted line and spread the pattern pieces for the amount of fullness desired. About 10" (25cm) or fullness has been added to the hem between each of the slash lines.
5. If the fabric is wide enough you can tape the front and back patterns together at the side seam.
6. Add Seam allowances



Sewing Instructions

Fabric Selection

Before you can cut out your pants, you will need to select the fabric. Lay out the patterns to determine how much fabric you will need.

Interfacing

Elastic

Typically waist elastic is 1" (2.5cm) to 1-1/4" (3cm).

Ballpoint Needle

I recommend a ballpoint needle for your sewing machine and Gutermann 100% polyester thread.

Materials

Qty	Item	
1	Pants Fabric	___ yds
1	1" (2.5cm)Elastic	1 package

Step I. Prepare the Fabric

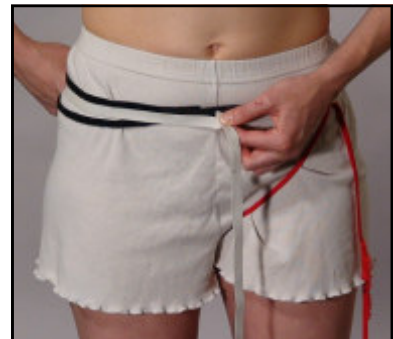
There are a variety of factors that may be involved in cutting the fabric. The steps below are the most common.

1. If the fabric is to be washed, preshrink it.
2. Press the fabric to remove wrinkles and ensure the lengthwise grain is at right angles to the crosswise grain.
3. Straighten one end of the fabric. To do this, pull a single crosswise thread, then cut along the line that is left.
4. Fold the fabric right sides together.
5. Place the pattern pieces on the fabric.
6. Pin the pattern pieces to the fabric.
7. Cut the fabric keeping the fabric as flat as possible.
8. Cut notches as required to align the fabric during sewing.
9. To keep the fabric from fraying when it is washed, the edges should be zigzagged.

Step II. Sew the Pants

The Palazzo pants in the example use elastic in a waistband casing.

1. Pin the inseams of one front leg to the back leg, right sides together, then sew.
2. Press open.
3. Repeat steps 1 and 2 for the other leg. Be sure you have a left leg and a right leg.
4. Turn one leg right side out and pull it into the other leg so the two legs are right sides together.
5. Pin the crotch curves together then sew.
6. Cut a length of elastic for the waist that is comfortable. Include a 1" overlap.
7. Cut a waistband casing for the elastic that is the length of the Palazzo pants waist seam plus 1" for seam allowances. If you are using 1" (2.5cm) elastic, the waistband should be 3" (7.6cm) wide.
8. Fold the waistband casing in half, right sides together, then sew the ends leaving a 1" (2.5cm) opening between one edge and what will be the folded top of the casing. This is the opening you will thread the elastic through once the casing is sewn to the pants.
9. Fold the casing in half good side out, pin to the pants, then sew.
10. Pull the elastic through the casing then zigzag the ends together to form a loop of elastic at the waist.
11. Hem the bottom of the Palazzo pants if desired.



Measure for a Comfortable
Waistband Elastic