

*Pattern Design Guides by Don McCunn***Bolero Jacket**

These instructions show how to create a Bolero Jacket from the basic fitted slopers.  
The instructions have been prepared for Don McCunn's online class "How to Make a Sleeve Sloper."

(rev: 4/18/2009)

Copyright © 2009 by Donald H. McCunn

- You may copy this Pattern Design Guide for your own individual use.
- You may not distribute or sell copies of the instructions to others including friends, club members, students, or clients.
- You may sell garments made using these instructions without any restrictions.

---

Design Enterprises of San Francisco  
1007 Castro Street, San Francisco, CA 94114  
(415) 282-8813 || Website: [Patternmaking-Classes.com](http://Patternmaking-Classes.com)  
Yahoo Groups: <http://groups.yahoo.com/group/How-to-Make-Sewing-Patterns>  
<http://groups.yahoo.com/group/Patternmaking-Classes>

# Bolero Jacket

by Don McCunn

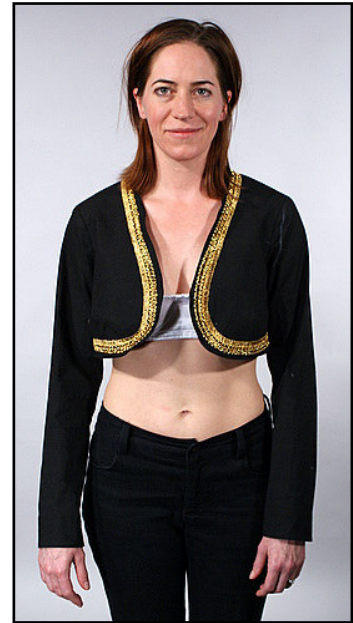
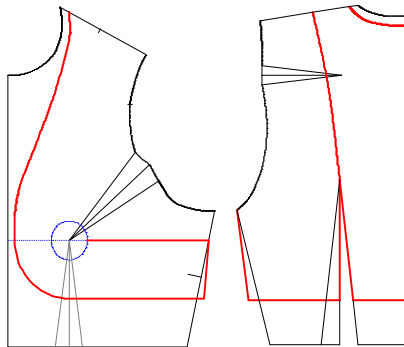
## Contents

|                             |   |
|-----------------------------|---|
| Creating the Patterns ..... | 2 |
| Sewing Instructions .....   | 4 |

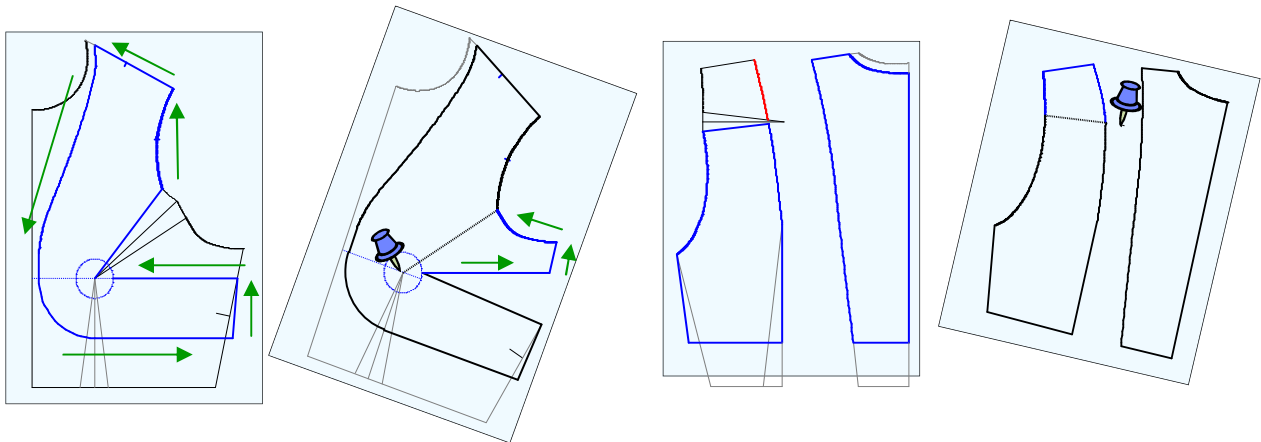
### The Design for a Bolero Jacket from the Slopers

The patterns for the Bolero Jacket demonstrate how to create a two-piece sleeve. This type of sleeve is common for jackets because it shapes the fabric to the bend of the arm between the elbow and the wrist.

The body of the Bolero Jacket is commonly cut to just below the bust and does not include a front closing. For the garment shown here I chose to create a bust dart that is parallel to the hem. The jacket is designed to hang fairly straight down from the bust with a little flare at the side and side back seams as shown by the red design lines below.



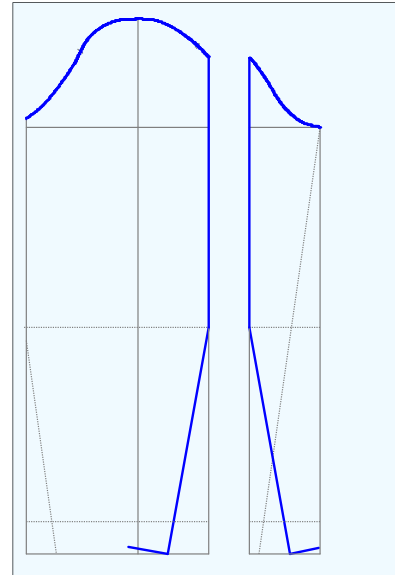
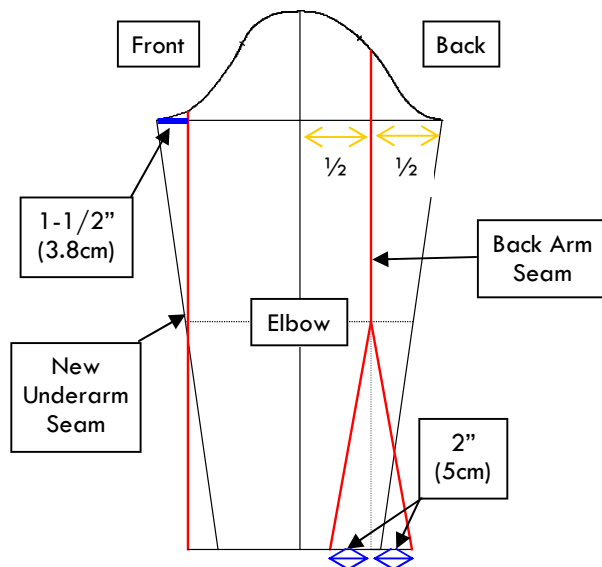
### Creating Patterns for the Body



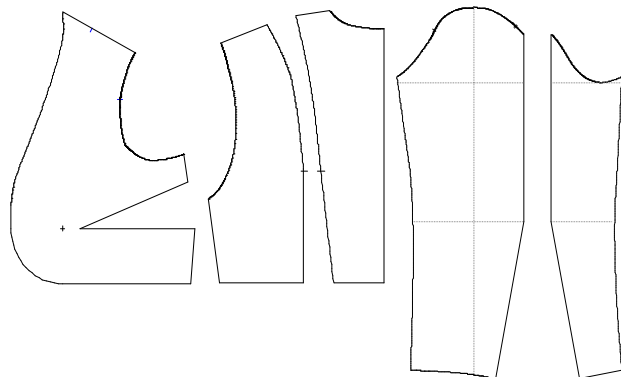
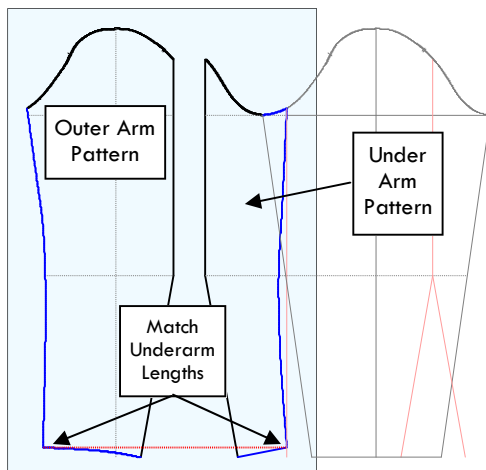
1. Place a fresh sheet of pattern paper over a copy of the front sloper with the design lines.
2. Trace around the pattern from the top of the Above Bust dart to the new dart line.
3. Pivot the pattern at the Bust Point and trace the new dart line, and remaining side seam & armscye.
4. Place a fresh sheet of paper over a copy of the back sloper with the design lines.
5. Trace the center back section up to and including the side back line.
6. Shift the paper and trace the side back section.
7. Pivot the paper at the point of the dart and trace the upper part of the side back section.

## Bolero Jacket, cont'd

### Creating Patterns for the Two-Piece Sleeve



1. On a copy of the Sleeve draw a new underarm seam 1-1/2" (3.8cm) in from the Sloper underarm seam.
2. Draw a line half way between the sleeve centerline and the back underarm seam down to the elbow. This is the Back Arm seam location.
3. At the wrist make marks 2" (5cm) on either side of the back of the arm, then connect these marks to the Back of Arm seam at the elbow.
4. On a fresh sheet of pattern paper trace the Sleeve cap from the new Underarm seam and down the back of the arm. Draw a short line at right angles to the Back Arm seam at the wrist.
5. Shift the paper for seam allowances.
6. Trace the Back Arm seam and the Sleeve cap to the Sloper's Underarm seam.



The Completed Pattern

7. Shift the pattern paper to the other side of the Sleeve Sloper.
8. Trace the 1-1/2" (3.8cm) portion of the Sleeve cap.
9. Extend the cuff of the Underarm pattern then curve the new underarm seam.
10. Draw in the Underarm Seam on the Outer Arm pattern to match the curve of the Underarm pattern.

(See also page 173 of my book.)

## Bolero Jacket, cont'd

---

### Sewing the Bolero Jacket

There are a variety of ways the Bolero Jacket can be sewn. I used the same fashion fabric for both the inside and outside of the body of the body of the jacket. In the description below I refer to the fashion fabric as the fabric that is seen and the lining fabric for the inside of the jacket. The trim is obviously optional.

1. Add 1/2" (12mm) seam allowances to all seams. Leave the Center Back line as a fold.
2. Cut the fabric using the patterns.
3. Pin the front of the body to the back of the fashion fabric, right sides together.
4. Sew the side seams and shoulder seams.
5. Add trim if desired.
6. Pin the front of the body to the back of the lining fabric, right sides together.
7. Sew the side seams and shoulder seams.
8. Pin the lining to the fashion fabric, then sew around the outside of the jacket.
9. Trim the outside seam allowance, then pull the jacket right side out through one of the armholes.
10. Press, then edge stitch the fashion fabric to the lining if desired.
11. Pin, then sew the sleeves together.
12. Pin, then sew the sleeve to the body of jacket.
13. Finish the cuff of the sleeve with either a rolled hem or facing.
14. Hand stitch the armholes of the lining to finish the sleeve.