

*Pattern Design Guides by Don McCunn***Period Fusion Blouse**

These instructions show how to create the Period Fusion Blouse. The instructions have been prepared for Don McCunn's online class "How to Make a Sleeve Sloper."

(rev: 4/18/2009)

Copyright © 2009 by Donald H. McCunn

- You may copy this Pattern Design Guide for your own individual use.
- You may not distribute or sell copies of the instructions to others including friends, club members, students, or clients.
- You may sell garments made using these instructions without any restrictions.

Design Enterprises of San Francisco
1007 Castro Street, San Francisco, CA 94114
(415) 282-8813 || Website: Patternmaking-Classes.com
Yahoo Groups: <http://groups.yahoo.com/group/How-to-Make-Sewing-Patterns>
<http://groups.yahoo.com/group/Patternmaking-Classes>

Period Fusion Blouse

by Don McCunn

Contents

Creating the Patterns	2
Sewing Instructions	5

The Design of Period Fusion Blouse

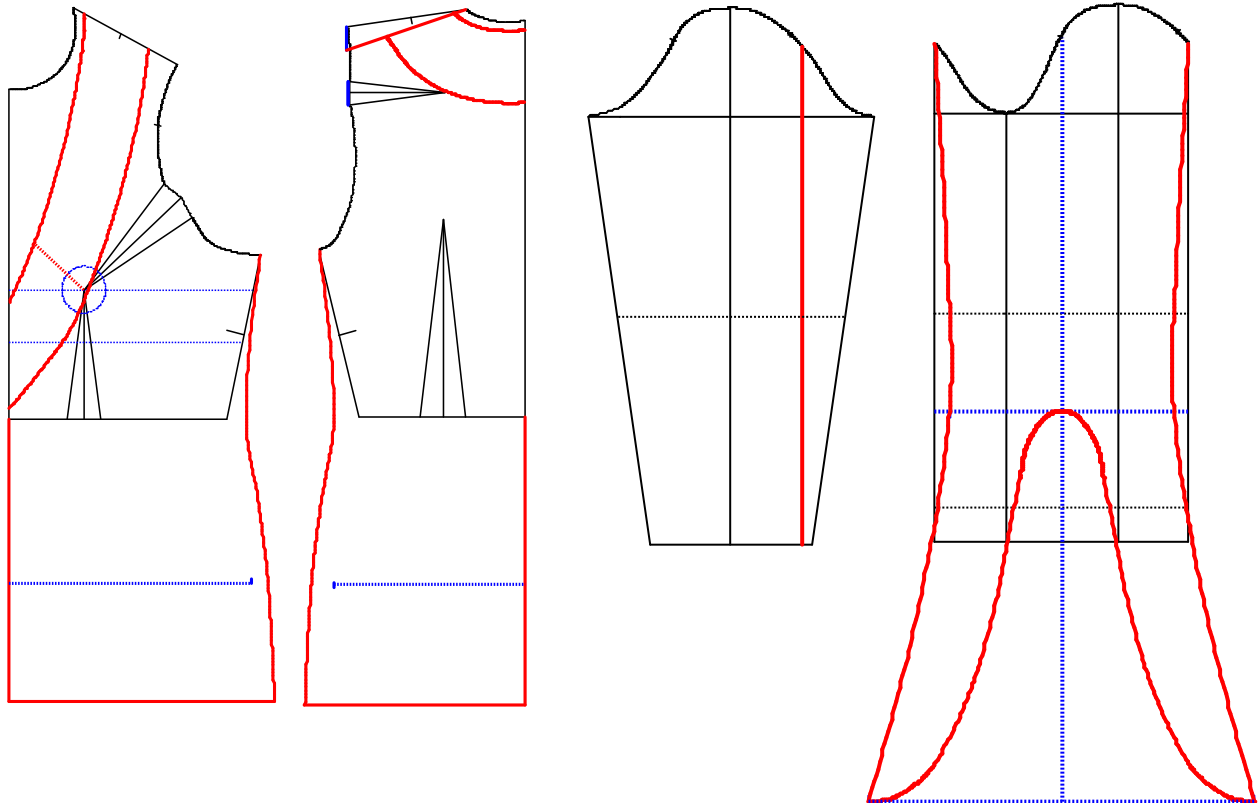
The Period Fusion Blouse is in part inspired by the hanging sleeves of Medieval times with the plunging necklines of Yves St. Laurent.

The important issue for sleeves of this type is to shift the seam from the underarm to the back of the arm. This allows the sleeve to hang from the elbow. If the seam is not changed, the upper arm of the sleeve will twist when the arm is raised.

The fringe on the sleeve is created using circles of fabric that are finished with a narrow rolled hem.

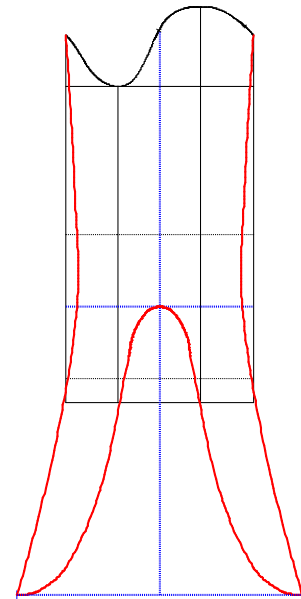
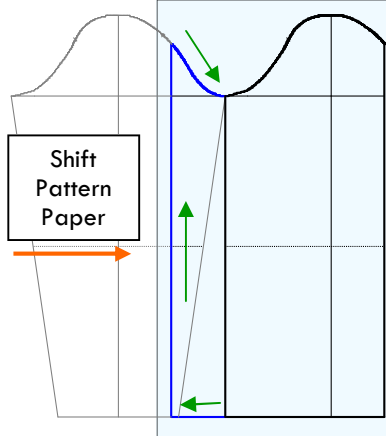
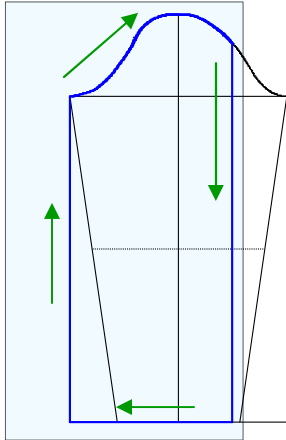
Design Features

- The hem is 1" (2.5cm) below the crotch depth.
- The Above Bust dart is pivoted to the neckline.
- The ruffle at the neckline is 3" (7.5cm) wide.
- The upper back dart is eliminated by lowering the shoulder seam.
- The hanging portion of the sleeve starts 3" (7.5cm) below the elbow and extends down another 18" (45cm).



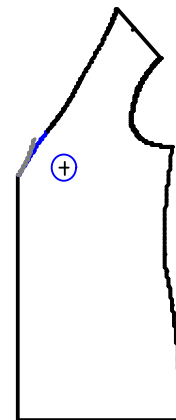
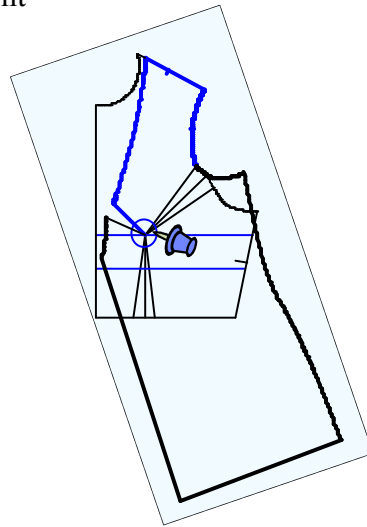
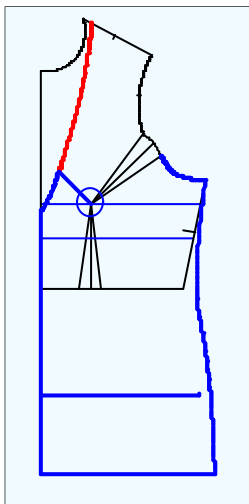
Period Fusion Blouse, cont'd

Creating the Sleeve Pattern



1. On a copy of the sleeve sloper draw in a line that is half way between sleeve centerline and the underarm seam. This is the location for the back of the arm.
2. Extend the underarm seam straight down from the bicep line to the cuff.
3. Place a clean sheet of pattern paper over the sleeve sloper.
4. Trace the sleeve from the underarm of the front of the pattern to the back of the arm.
5. Shift the pattern paper so the new underarm line overlaps the underarm line of the original sleeve.
6. Trace from the back of the arm to the underarm location.
7. Draw in the desired design lines.

Creating the Pattern for the Front



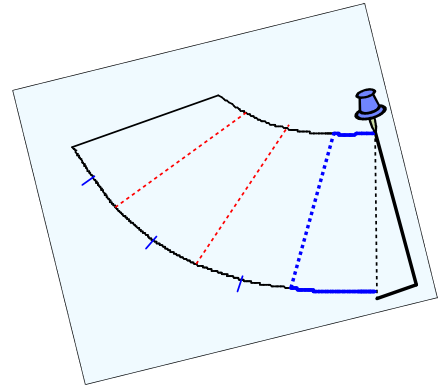
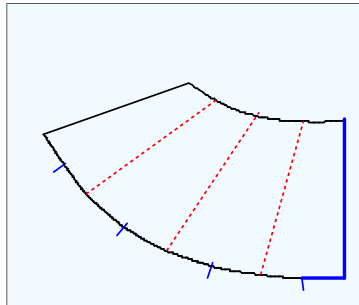
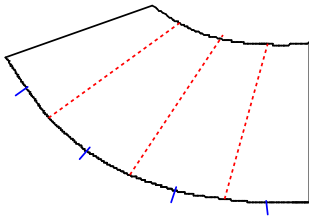
1. Place a clean sheet of pattern paper over the front sloper that has the design lines.
2. Trace from the bottom of the neckline to the bottom of the upper bust dart.
3. Pivot the pattern from the bust apex.
4. Trace the upper portion of the bodice.
5. Smooth out the neckline.

Period Fusion Blouse, cont'd

Create the Patterns for the Neck Ruffle

Create the neckline ruffle so there is no fullness or gathers along the inside edge but half again as much fullness along the outside of the ruffle. To create the ruffle copy the shape from the design lines then mark pivot lines every couple of inches.

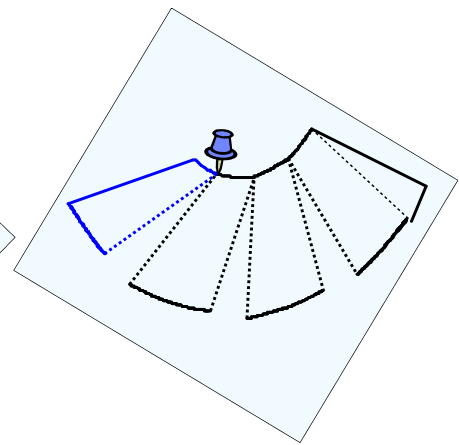
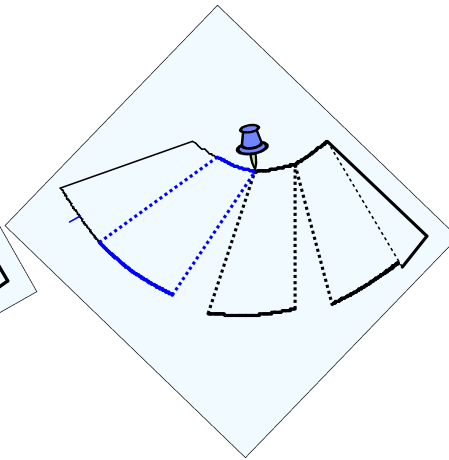
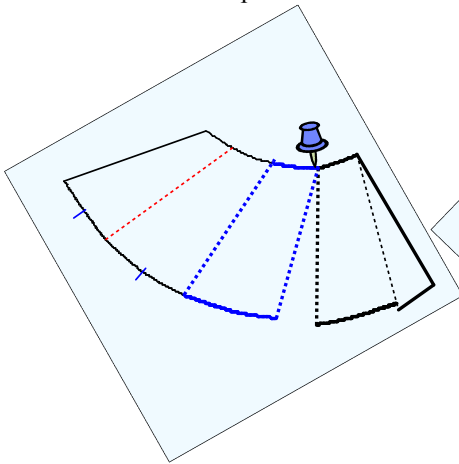
The procedure for both the front and back patterns is the same. I show the process here for the back. Once the patterns are created tape the front to the back at the shoulder seams. The center front and back of the ruffle will need to be sewn.



1. Trace the shape of the neck ruffle.
2. Add pivot lines for adding the fullness.
3. Make marks half way between the pivot lines.

4. Place a fresh sheet of pattern paper over the ruffle pattern.
5. Trace the center back line and over to the first mark.

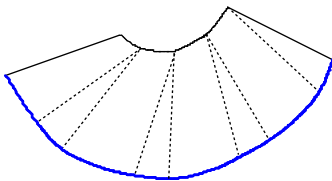
6. Pivot the pattern paper from the neckline.
7. Trace the pattern over to the next slash line.



8. Pivot the pattern paper from the neckline.
9. Trace the pattern over to the next slash line.

10. Pivot the pattern paper from the neckline.
11. Trace the pattern over to the next slash line.

12. Pivot the pattern paper from the neckline.
13. Trace the remainder of the pattern.



14. To complete the pattern smooth out the outside line of the ruffle.

Period Fusion Blouse, cont'd

Create the Sleeve Ruffle

To create the fringe for the bottom of the sleeves I used a rotary cutter to cut circles of fabric from the cotton gauze I was using for the body of the garment. By using a dinner plate and a tea cup saucer it took two circles of fringe for each sleeve that finished to 1" (2.5cm).



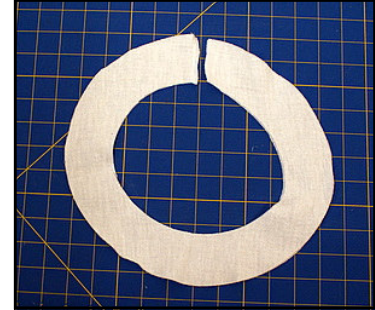
The Cut Fringe



1. Layout two layers of the fabric on a cutting mat.
2. Place a dinner plate on the fabric.
3. Cut around the dinner plate.



4. Place a tea cup saucer in center of the cut circles.
5. Cut around the tea cup plate.
6. Remove the tea cup plate.



7. Cut the circle along the straight of the goods.
8. Stitch the two circles of fringe using a 1/4" (6mm) seam allowance.
9. Roll the hem of the fringe as described in the video.

Sewing the Period Fusion Blouse

To finish the seam allowances of the cotton gauze I was using, I tried something different. After sewing each seam, I pressed it open then from the right side I zigzagged across the seam. I then trimmed the seam allowance close to the stitching.

1. Add 1/2" (12mm) seam allowances to all seams. Leave the Center Back and Center Front as folds except for the neckline ruffle which will need seam allowances.
2. Cut the fabric using the patterns.
3. Pin the center front and center back seams of the neckline ruffle, good sides together, then sew
4. Roll the hem of the neckline ruffle.
5. Pin the front bodice to the back bodice along the shoulder and side seams, right side together, then sew.
6. Use a strip of fashion fabric to gather the dart at the neckline.
7. Pin the neckline ruffle to the bodice, wrong sides together, then sew.
 Note: This finish puts the seam allowance for the neckline ruffle between the finished ruffle and the body of the garment.
8. Turn the neckline ruffle to the outside of the garment and edge stitch around the neckline.
9. Pin the sleeve fringe to the bottom of the sleeve, rights sides together, then sew.
10. Pin the sleeve seam, right sides together, then sew.
11. Turn the sleeve right side out, then pin to the armscye.
12. Sew the sleeve to the bodice.
13. Roll hem the bottom of the bodice as described in the class' video.



The Front Neckline is gathered very slightly to accommodate the shaping from the pivoted Above Bust dart.

I used a strip of the fashion fabric along the entire neckline to reinforce it.